

# COMMUNITY GARDEN PARTNERSHIP PROGRAM

The Community Garden Partnership Program is a partnership between the County of San Mateo Office of Sustainability and local community organizations, schools, businesses and more.

We are looking to partner with local community organizations and businesses to build vibrant community gardens and to promote sustainable gardening and composting techniques. The goal of the program is to provide the opportunity for community members to learn about composting through the gardens, and ultimately, practice the composting techniques at home and reduce the amount of organic wastes from being sent to landfills. Gardeners can use compost as a soil amendment to grow nutritious and fresh produce!

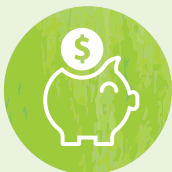
The Office of Sustainability will provide funding and resources to help start up and maintain the gardens, while the partnering organization's role is to use the funding to build the garden, coordinate with the gardeners to keep the garden up and growing and promote composting and sustainable gardening. Please reach out to us if your organization is interested in getting started on a community garden!

## BENEFITS:



### IMPROVED HEALTH AND NUTRITION

Gardening has been shown to contribute to participants' mental and physical health. As a form of relaxation, recreation and physical activity, gardening can have a positive impact on mental and physical well-being. Access to nutritious and fresh produce provides numerous health benefits.



### FOOD SECURITY

Community gardens can increase the availability of locally grown fresh fruits and vegetables, help to reduce the cost of food for families, and increase community self-sufficiency, all while contributing to local efforts to reduce GHG emissions—especially important for low-income populations in areas with limited access to grocery stores and farmers' markets.



### ENVIRONMENTAL IMPROVEMENTS

In urban areas, gardens add to community green space, which can reduce stormwater runoff and provide habitat for pollinators and other wildlife.



OFFICE OF  
SUSTAINABILITY  
COUNTY OF SAN MATEO

## PARTNERSHIP REQUIREMENTS

- Community garden must be in San Mateo County
- Community garden must be accessible to the public (exception for schools, youth/senior centers)
- Partnering organization must commit to maintaining the garden by keeping up with the vegetation and compost bins
- Partnering organization must compost the materials generated from the garden and promote composting to the garden members

## THE OFFICE OF SUSTAINABILITY CAN PROVIDE


- Funding to build planter beds or plots
- Workshops and classes
- Compost bins
- Compost signage
- Compost brochures and outdoor brochure holders
- Compost and garden tools
- Storage shed
- Rainwater irrigation system




## PARTNERING GARDENS

Visit [www.smcsustainability.org/communitygarden](http://www.smcsustainability.org/communitygarden) to see a map of the gardens we are currently partnering with.

### CONTACT THE OFFICE OF SUSTAINABILITY AT:

 888-442-2666 (Hotline)

 [sustainability@smcgov.org](mailto:sustainability@smcgov.org)

 [www.smcsustainability.org](http://www.smcsustainability.org)